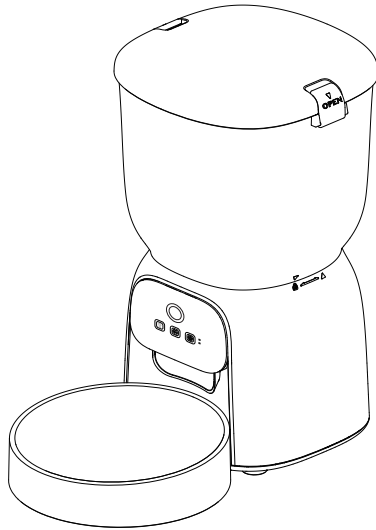


Duodpet

# Smart Feeder

## Instruction Manual



THANKS FOR CHOOSING OUR SMART PET FEEDER

## Safety Instruction

1. Children should use this feeder only under adult supervision.
2. Do not use the feeder for pets who cannot reach the food bowl or have physical disabilities.
3. Do not immerse the base in water, as this will damage electronic components like the control panel.
4. Do not place any foreign objects in the pet feeder.
5. Do not place wet or spoiled pet food in the feeder.
6. Do not disassemble the equipment yourself.
7. Do not modify the pet feeder.
8. If the equipment malfunctions or parts are damaged, do not attempt to repair it yourself; contact your seller immediately for support.
9. Always unplug the product when not in use or before cleaning.
10. If the power plug gets wet, turn off the power at the outlet and do not attempt to unplug it.

## Notice

1. Do not let your pet chew or swallow any accessories. If you are worried about damage to the power cord, please purchase a cord conduit (hard plastic protector) at a hardware store.
2. Do not place the feeder in direct sunlight or environments outside the normal operating temperature range of 0°C - 40°C.
3. Do not use rechargeable batteries. Please use alkaline D-size batteries for the backup power supply.
4. Check the batteries regularly. Be sure to replace them before traveling or going on a business trip.
5. Do not lift the feeder directly by the lid, food tank, or food bowl. Always hold the base with both hands to lift and transport it, and ensure the power is unplugged.
6. Please use dry pet food with a kibble size of 3-10 mm to avoid food jams or blockages at the outlet.
7. Please read and follow all important instructions listed on the pet feeder and packaging carefully.

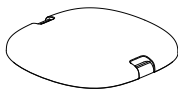
# Packing List

After opening the product package, please make sure the pet feeder is intact and check the list to ensure all accessories are complete.

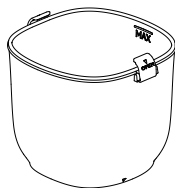
## Main Unit



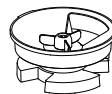
## Accessories



1 Food tank lid



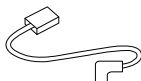
2 Food tank



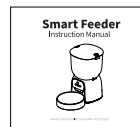
3 Dispensing rotor



4 Food bowl



5 Power adapter

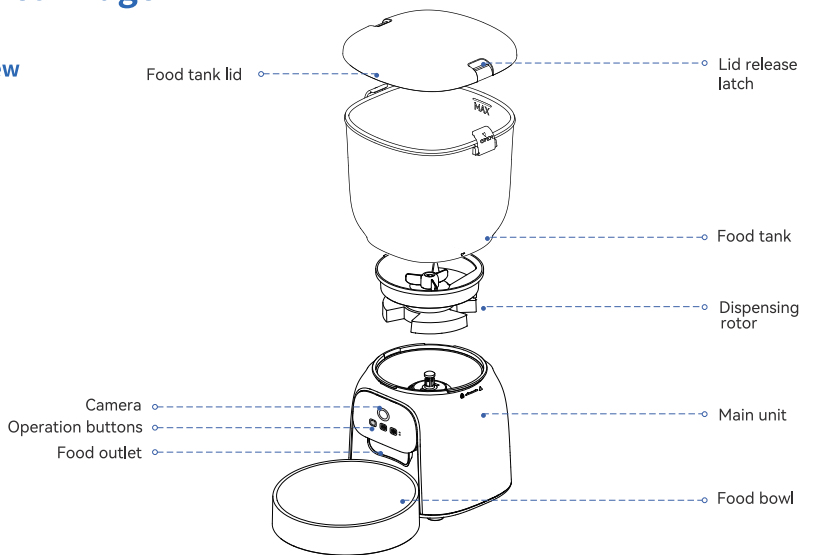


6 User manual

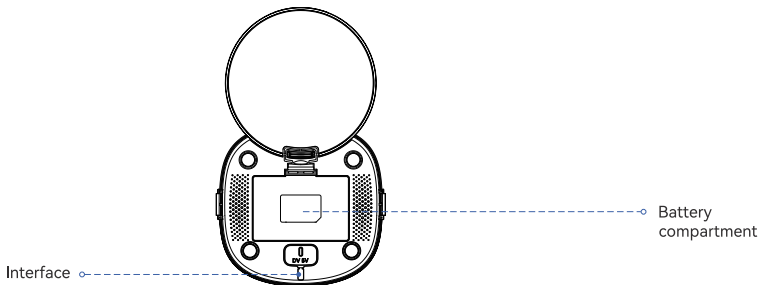
**Note:** In order to provide better products, we regularly make improvements. If the product picture slightly differs from the actual product, please refer to the actual product.

# Product Image

## Front View



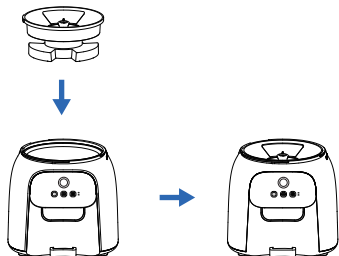
## Bottom View



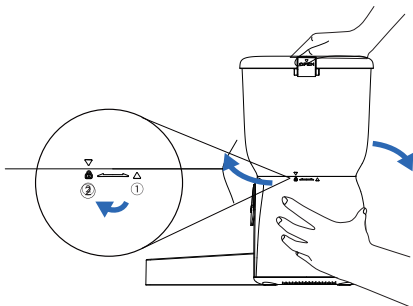
# Mounting Sequence

## (1) Installation of the dispensing rotor

Put the dispensing rotor into the base of the main unit correctly as shown in the illustration.

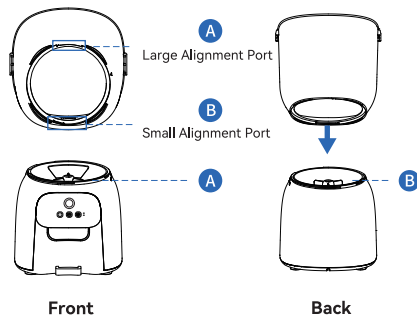


Put the food tank into the corresponding slots on the main unit, align with the mark  $\Delta$ , and rotate clockwise from ① to ② until you hear a click and tighten it. Then make sure the fastening is not loosened after the operation is completed.



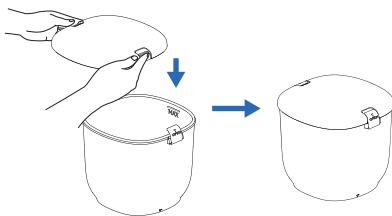
## (2) Installation of the food tank

Pay attention to the large (A) and small (B) alignment ports, and place the tank into the corresponding slots on the main unit.

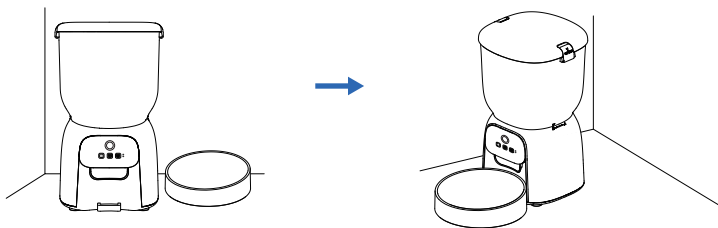


## (3) Installation of the food tank lid

Pick up the food tank lid with both hands, align it downwards with the food tank, and fasten the clasps on both sides to finish.



**(4) Place the feeder base on a level surface and attach the food bowl to the base.**



## Button Description



**Recording button:** Press and hold for 1 second until you hear a "beep" to start recording. The recording time cannot exceed 10 seconds. Release the button, and you will hear two "beeps" indicating it has been saved.

**Feeding button:** Short press to dispense one serving of food; it will play the recording once. After 30 seconds of no operation, the buttons will lock with a "beep". Press and hold again for 3 seconds to unlock, accompanied by two "beeps".

**Reset button:** In the unlocked state, press and hold for 6 seconds until you hear a "beep" to clear all data. The device will be restored to factory settings (network configuration, feeding plans, etc.).

### Note:

1. Buttons lock automatically after 30 seconds of inactivity.
2. Buttons only function when unlocked.

Indicator light color	Indicator light signal	Equipment status
White	Flashing	Network pairing in progress
	Solid bright	Network connection successful
Red	Fast flashing	Device locked/unlocked (flashes 2 times) / Power on (flashes for about 20s, then turns off)
	Slow flashing	Low battery/Motor stalled
	Solid bright	Battery powered mode

**Note:**

The App will push exception alerts when the equipment fails (low battery, motor stall, insufficient food, clogged food outlet).

## Description of Low Power Consumption

1. When not plugged in, the feeder defaults to battery power. Please ensure batteries are properly installed.
2. To conserve battery life and ensure reliable feeding, the feeder enters low-power mode after **30** seconds of inactivity. In this mode, App remote control is disabled, but feeding schedules and device status will still operate normally.
3. To use App functions, please connect the power cord and ensure successful network pairing.

**Note:** In low-power consumption mode, the scheduled feeding plans will continue to execute.

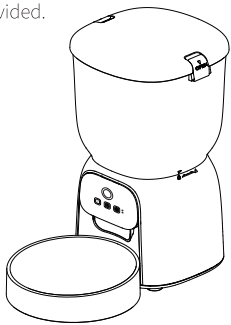
## Care Instructions

1. Please clean the feeder regularly for your pet's health.
2. When the food bowl gets dirty or accumulates crumbs, remove the bowl to clean it.
3. Use a soft, damp cloth to clean the control panel and main unit base.
4. Do NOT put the main unit in the dishwasher. However, the stainless steel food bowl is dishwasher-safe.

# Instructions

## 01 | Installation

- ⦿ Complete assembly according to the sequence provided.



## 02 | Connect the power supply

- ⦿ Plug the 5W/1A power adapter into an outlet and connect it to the unit.
- ⦿ Turn on the rocker switch at the bottom of the device; the LED light will illuminate, indicating power is on.
- ⦿ Open the battery compartment at the bottom and install 3 D-size batteries (backup power) to prevent power failure.

### Note:

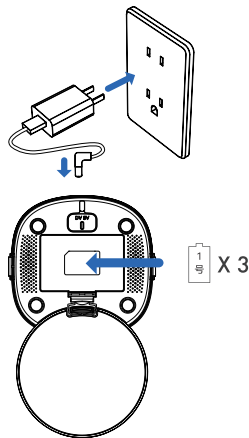
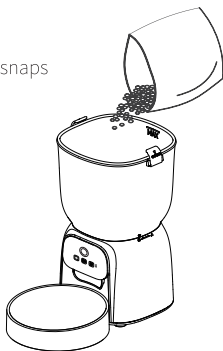
- 1) Batteries not included.
- 2) Ensure all parts are completely dry before turning on the power.

## 03 | Put pet food in the food tank

- ⦿ Press the release latches on both sides of the top cover to open it.
- ⦿ Pour in dry pet food.
- ⦿ Close the lid and press the snaps to secure it.

### Note:

- 1) Do not use canned or wet pet food.
- 2) Recommended kibble size is 3-10 mm.



## 04 | Recording

© Press and hold the recording button for 1 second until you hear a "beep" and start recording. Release the button to hear two "beeps" and end the recording. Maximum recording time is 10 seconds. Repeat this process to overwrite.

**Note:**

- 1) Audio only plays when a recording is saved.
- 2) It will play once during feeding.

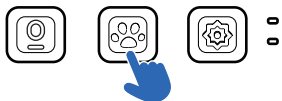


## 06 | Feed

© Manual feeding: Short press the feeding button to dispense 1 portion.

**Attention:**

- 1) Please unlock the device before pressing.
- 2) Scheduled feeding plans will not be affected.



## 05 | Lock/Unlock

© The buttons will lock automatically with a "beep" after 30 seconds of inactivity. Press and hold the [lock] button for 3 seconds to unlock, indicated by two "beeps".

**Attention:**

- 1) Buttons cannot be operated while locked; unlock first.
- 2) The locked state does not affect App operations.

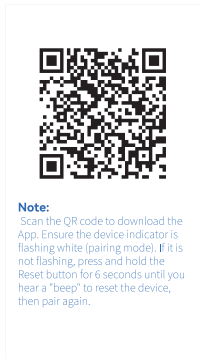


## 07 | Reset

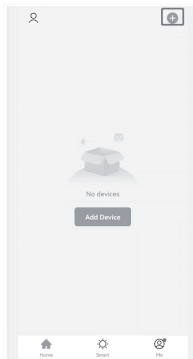
© In the unlocked state, press and hold the reset button for 6 seconds until you hear a "beep". The device will restore factory settings, clearing network information and feeding schedules. Reconfigure the network after resetting.



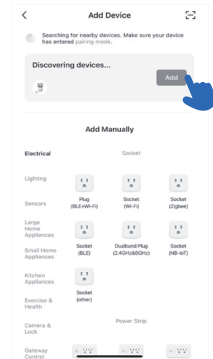
# Smart Life APP Specific Operations



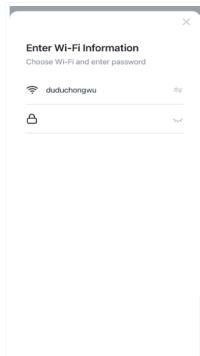
1、Download the App and register an account.



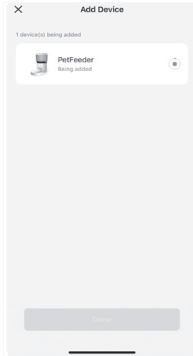
2、Enter the main interface and click "Add Device".



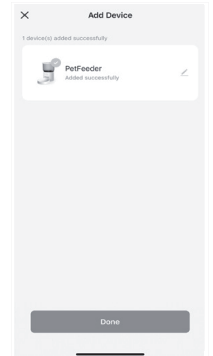
3、Turn on Bluetooth and grant required permissions on your phone. Wait for the device to be discovered automatically and click "Add".



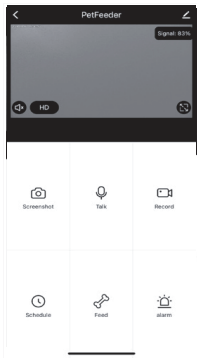
4、Enter your Wi-Fi password (Note: The name and password cannot contain Chinese characters or special symbols).



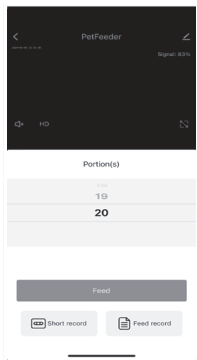
5、Wait for the device to connect to the network.



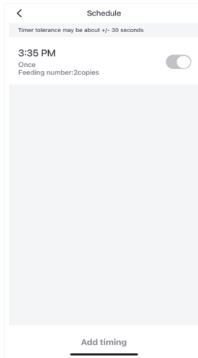
6、Device added successfully, click "Finish".



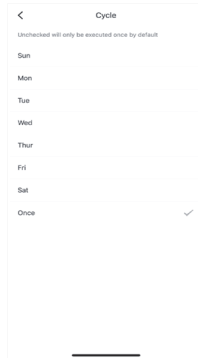
7. View real-time, high-definition video.



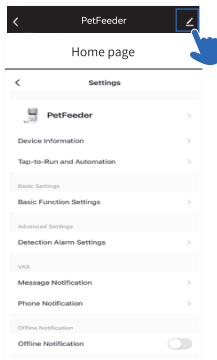
10. Tap the manual feeding button on the home page to customize immediate portions (maximum 20 portions).



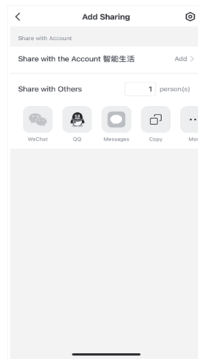
8. Click on the home page to schedule feeding and add a plan.



9. Set the time and number of portions according to your pet's eating pattern. Select days from Monday to Sunday, then click "Save".



11. Tap the Settings icon in the upper right corner to enter the settings interface.

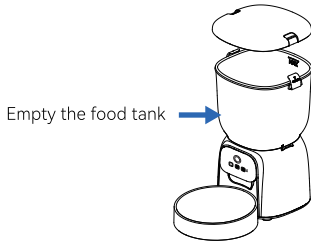


12. On the Settings screen, tap "Share Device" to grant access to family or friends.

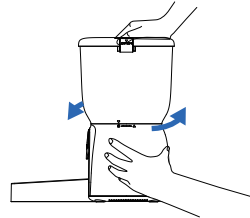
# Cleaning Instructions

Follow these steps to clean the feeder:

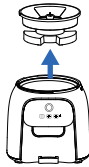
- (1) Remove the top cover and empty the food tank completely.



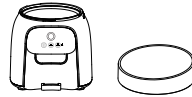
- (2) Hold the base and rotate the food tank counterclockwise to remove it.



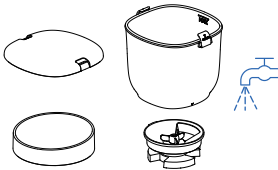
- (3) Remove the dispensing rotor from the bottom of the tank.



- (4) Empty the food bowl and remove it from the base.



- (5) Rinse the removed parts in water or with food-grade detergent and let them air dry.




- (6) Wipe the base of the main unit with a damp towel. Do NOT rinse the base with water.



# Simple Troubleshooting

## Problem solutions

### **Q: I press any button without a response.**

A: The buttons lock automatically after 30 seconds of inactivity. Please press and hold  for 3 seconds to unlock.

### **Q: App video cannot be displayed properly.**

A: Please ensure the device is in an environment with a strong Wi-Fi signal.

### **Q: The App cannot connect to the feeder.**

A: 1) Check if the Wi-Fi name and password contain Chinese characters or are longer than 12 digits. Ensure the Wi-Fi is a 2.4GHz network.  
2) Restart your phone, close background apps, turn on Bluetooth and location services, and try connecting again.

### **Q: The feeder does not dispense food properly or does not dispense food at all.**

A: Check if the food bowl is overflowing or causing a blockage. Clean the food outlet if necessary. If using battery power, check if the batteries are dead or leaking.

### **Q: Feeder displays offline.**

A: Ensure the distance between the feeder and your router is under 10 meters without physical barriers (walls). Wi-Fi signals drop sharply through walls, causing unstable connections and offline status.

### **Q: No response when powered on.**

A: Make sure the power adapter is properly plugged in. If the connection is secure and it still won't power on, contact customer service.

# Warranty & Customer Service

When you receive the product, please check it as soon as possible and keep the original box. We offer a one-year warranty service. For troubleshooting and support, please contact the seller.

## Product Information

Product name: Smart Pet Feeder

Product model: F01-V

Food tank capacity: 4L

Power Supply: DC 5V/1A power adapter; 3 x D-size alkaline batteries  
(Backup)

Power adapter: AC 110-240V input, DC 5V output

G.W: 1.26 kg

Size: 190\*184\*315mm

MADE IN PRC

