

Duodpet

Pet Fresh Food Maker User Manual



THANKS FOR CHOOSING OUR PET FRESH FOOD MAKER

Important Safeguards

When using electrical appliances, basic safety precautions should always be followed to reduce the risk of fire, electrical shock, and injury to persons:

Electrical Safety

1. Voltage: Use the plug only in a standard electrical outlet (120V/60Hz). Insert the plug directly into the outlet.
2. No Immersion: To protect against the risk of electrical shock, Do NOT put the appliance in water or other liquids.
3. Cord Care: Do Not pull or carry by the cord. Keep the cord away from heated surfaces. Do not allow the cord to hang over the edge of a table or counter.
4. Plug Handling: Do Not unplug by pulling on the cord. To unplug, grasp the plug and pull from the outlet. Do Not touch the plug with wet hands. Turn off the switch before unplugging.
5. Damaged Cord: Do Not use the appliance with a damaged cord or plug, or if it has been dropped, damaged, left outdoors, or dropped into water. If the power cord is damaged, it must be replaced by the manufacturer, its service agent, or similarly qualified persons in order to avoid a hazard.

Burn & Heat Hazards

1. Hot Steam: Be extremely careful to avoid burns when removing the lid or steamed items.
2. Residual Heat: The heating element surface is subject to residual heat after use. Do Not put any flammable or explosive objects around the appliance.
3. First Use Odor: During the first use, a slight plastic odor may occur due to high temperatures. This is normal; please keep the room ventilated.

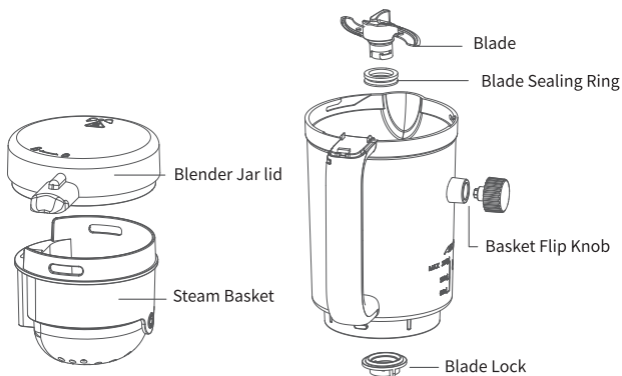
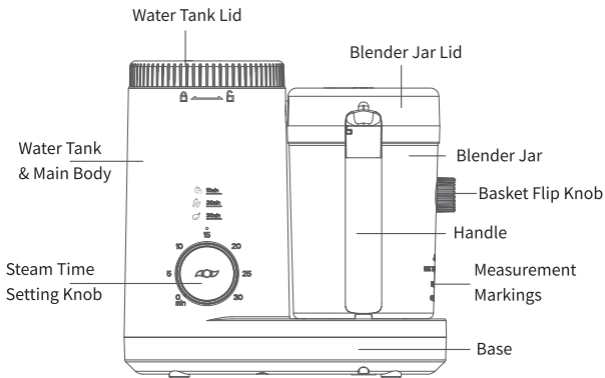
Operation Environment

1. Household Only: This appliance is intended for indoor household use only. Do Not operate outdoors or for commercial purposes.
2. Placement: The unit should be placed on a level surface away from sinks and hot surfaces.
3. Attendance: Do Not leave the appliance unattended when plugged in.

User Safety & Maintenance

1. Children Safety: Children should be supervised to ensure they do not play with the appliance. This device is not intended for use by persons with reduced physical or mental capabilities unless supervised by a responsible adult.
2. Proper Use: Use only as described in this manual. Never modify the product or disassemble it yourself.

Product Parts



Technical Specifications

Product Name	Pet Fresh Food Maker
Product Model	PFM2711
Rated Voltage	120V
Rated Frequency	60Hz
Rated Power	Steam: 300W Blend:80W
Dimension	22.1×15.1×21.8 cm
Capacity	Water Tank: 200ML Blender Jar: 250ML
Material	Water Tank:304 stainless steel Blade:304 stainless steel Blender Jar:Tritan

Before First Use

01 | Unboxing Check

Inspect the package and device for any signs of damage upon arrival. Remove all packaging materials, stickers, and films. Keep plastic bags and foam away from children and pets to avoid suffocation risks.

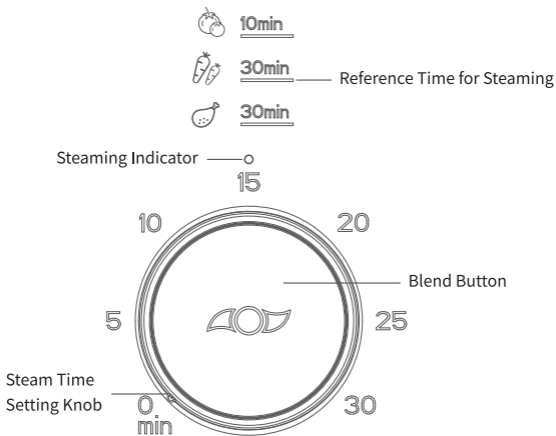
02 | Steam Cleaning Cycle

- Fill the water tank to the MAX line with fresh water and assemble the empty jar and steam basket onto the base. (Note: Do not put any food in the basket or jar).
- Run a steaming cycle for approximately 20 minutes.
- Once finished, discard the remaining water and rinse the jar and accessories with warm water.

03 | Hygiene Tip

Always wash your hands thoroughly before preparing food for your pet, especially when handling raw meat.

Controls & Functions



Blend Button:

Press and hold the button to blend; release to stop.

Safety Note: The appliance will stop automatically after 30 seconds of continuous blending to protect the motor. Please wait 3 seconds before restarting.

Steam Time Setting Knob:

Turn the knob clockwise to set the steaming time (0 to 30 minutes). The steaming indicator will light up, and the cooking process will begin. When steaming is completed, you will hear a "beep", and the steaming indicator will turn off.

Note: When steaming food, we advise adding water to the "MAX" line. The appliance operates quietly while heating the water. Steam will become visible in the blender jar after approximately 3 minutes.

Precautions For Use

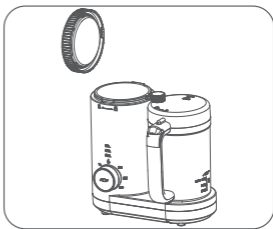
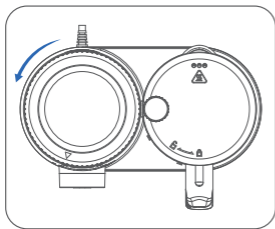
- **Safety Lock:** The device will not start unless the Blender Jar and Lid are securely locked.
- **Pre-use Check:** Before each use, verify that the silicone ring on the steam outlet is not blocked.
- **Capacity:** Do NOT exceed the 250ml MAX line for blending.
- **Basket Removal:** You must remove the Steam Basket before using the blend-only function.
- **Protection Systems:** Automatically switches off if the water tank runs dry (Dry-Burn) or if the motor gets too hot (Overheat).

Operation

1: Steam & Blend

01 | Fill the Water Tank

Turn the water tank cover counterclockwise to open it. Add exactly 200ml of purified water, then close the cover securely.



Note:

1. Before each use, please clean all parts except the main unit and check whether the silicone ring on the steam outlet is blocked.
2. Make sure that the water in the water tank does not exceed 200ml, and there is a scale on the blender cup, which can be used to add water to the water tank.
3. Please use pure water, impurities in tap water will cause timescale buildup in the tank
4. Do NOT add any liquid other than pure water to the tank.
5. After each use, please pour out the water in the water tank and wipe it after the machine has cooled down.

02 | Install the Blade

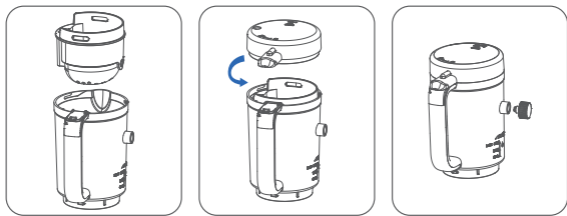
Install the sealing ring onto the blade. Insert the blade through the bottom hole of the blender jar using the plastic handle. Secure it from underneath by twisting the Blade Lock clockwise.



Note: The blade is extremely sharp; handle with care. Ensure the seal is attached to prevent leaks.

03 | Add Ingredients

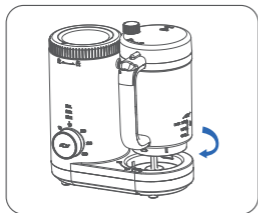
Place the steam basket into the blender jar and add food cut into approx. 1.5 cm cubes. Close the blender jar lid and rotate counterclockwise to lock it. Insert the basket flip knob.



Note: Please thaw frozen food before steaming to ensure it reaches the proper temperature.

04 | Start Steaming

Rotate the assembled blender jar clockwise into the base. Plug in the device and turn the timing knob to set the required steaming time. You will hear a "beep" when finished.



Note: During the cooking process, high-temperature steam will be released from the blender jar spout. Please do not touch the high-temperature parts or steam to avoid scalding. Rotate the blender jar in the proper position. If not, the control panel won't work.

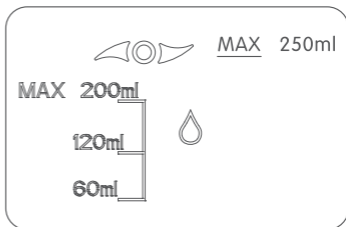
05 | Flip & Blend

After steaming, Do NOT open the lid. Simply rotate the Basket Flip Knob to drop the cooked food directly from the steam basket into the blending jar. Press and hold the Blend button to puree the food. Always check the food temperature before feeding your pet.

Note: The device will automatically stop after 30 seconds of continuous use to protect the motor. Please wait for 3 seconds before restarting.

2: Blend Only (Without Steaming)

- 1) Cut ingredients into approx. 1.5 cm cubes and place them directly into the blending jar. Remove the steam basket (it is not needed for this mode).
- 2) Add an appropriate amount of liquid (water or broth). Do NOT exceed the 250ml MAX blending mark.
- 3) Place the lid on the jar and rotate it clockwise until securely locked. Press and hold the Blend button to start blending. Release it to stop.



Recommended Cooking Times

Ensure all meat is thoroughly cooked to protect your pet's digestive health.

Ingredient	Time (Approx.)	Why it's good for pets
Chicken / Beef	20-25 mins	High-quality protein source.
Fish (Boneless)	15-20 mins	Rich in Omega-3 oils.
Pumpkin / Carrot	15-20 mins	Supports digestion & fiber.
Sweet Potato	15-20 mins	Good source of vitamins.
Liver	15 mins	Excellent nutrient booster.

Cleaning, Maintenance & Storage

Daily Cleaning:

Unplug and let the device cool down before cleaning. Wash the Jar, Basket, and Blades with warm soapy water. Wipe the base with a damp cloth. (Never immerse the main unit in water).

Descaling (To ensure steam efficiency):

- **Why:** To ensure steam efficiency and prevent the machine from stopping prematurely.
- **Recipe:** Mix 20ml white vinegar + 40ml water.
- **Process:** Pour into tank → Run steam function for 1-2 mins to heat → Unplug and soak for 30 mins (Do Not exceed 30 mins) → Rinse tank twice with fresh water.

Storage:

Ensure all parts are completely dry to prevent mold. Store in a cool, dry place out of reach of children and pets.

Troubleshooting

Problem	Possible Cause	Solution
No steam generates.	<ol style="list-style-type: none">1. No water in the tank.2. Power connection failure.	<ol style="list-style-type: none">1. Switch off, unplug, and add water.2. Check connection and restart.
Steaming cycle too long.	<ol style="list-style-type: none">1. Limescale build-up in the tank.	<ol style="list-style-type: none">1. Descale manually following the maintenance instructions.
Food not thoroughly cooked.	<ol style="list-style-type: none">1. Food pieces are too large.2. Too much food in basket.	<ol style="list-style-type: none">1. Cut food into smaller 1.5cm cubes .2. Reduce the amount of food in the basket.3. Ensure proper water level in the tank.
Mixing function does not work.	<ol style="list-style-type: none">1. Too much food (blocks blade).2. Motor protection triggered.3. Safety lock is engaged.	<ol style="list-style-type: none">1. Switch off the food maker and reduce amount of food for mixing. We recommend the maximum volume, 250ml of food for mixing.2. Stop mixing and wait for foodmaker to cool down before mixing again.3. Ensure the mixing bowl lid isturned clockwise and safety interlock on jug bottom is inserted properly into the base.

Warranty & Customer Service

When you receive the product, please check it as soon as possible and keep the original box. We offer a one-year warranty service. For troubleshooting and support, please contact the seller.

Product Information

Product name: Pet Fresh Food Maker

Product model: PFM2711

Product material: PP (Polypropylene), Silicone, Stainless Steel, Tritan

MADE IN PRC

